

Sterile Absorbable Injectable Dermal Filler with LIDOCAINE

HYALMASS

CE
2195

- Soft 
- Mild 
- Hard 
- Ultra 

**SMOOTH CONFIDENCE,
PAIN-FREE BLISS:**
ENHANCE YOUR BEAUTY
WITH LIDOCAINE-INFUSED
DERMAL FILLERS!

MAY
PHARM

MADE IN KOREA

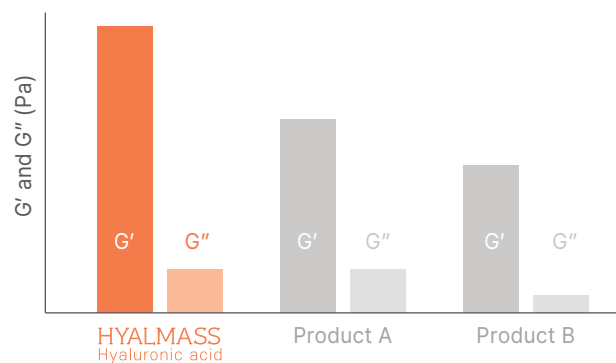


Better Volume Effect and Retention

The Hy-BRID Technology can make hyaluronic acid to be highly dense and uniform sized particles. This enables Hyalmass Hyaluronic Acid to have optimal viscoelasticity and long-lasting volume.

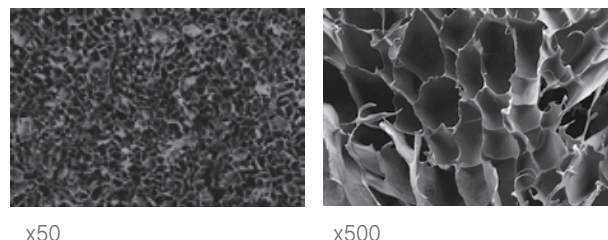
Viscoelasticity

G' : Storage Modulus / G'' : Loss Modulus



Lattice Structure

SEM, Scanning Electron Microscope



x50

x500

Hy-BRID TECHNOLOGY

Hyper cross-linked
Based on Non-animal HA
Residue-free
Improved Density and Elasticity

Cross links

Hyaluronic Acid

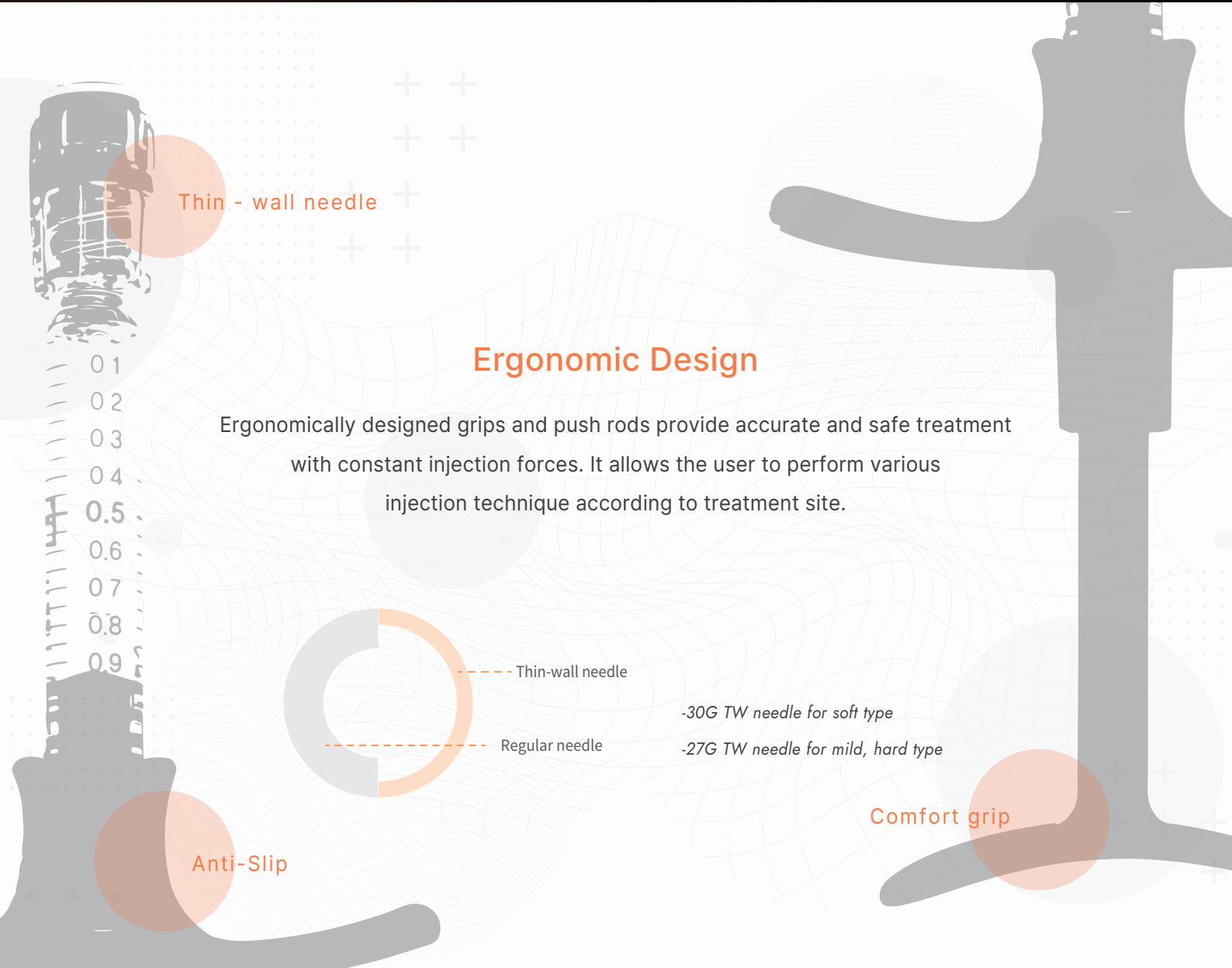
Performance Test



Standard
No impurities, transparent and colorless gel
21.6 ~ 26.g mg
6.5 ~ 7.5
< 2ppm
< 20EU
1.0ml

Result	
Appearance	Pass
HA Concentration	24.1 mg
pH	7.10
Residual BDDE	Not Detected
Endotoxin	< 0.100 EU
Volume	Pass

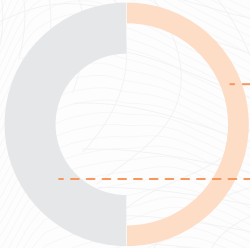
Strict manufacturing control minimizes risks of adverse side effects by reducing endotoxin and BDDE levels below detection limits.



Thin - wall needle

Ergonomic Design

Ergonomically designed grips and push rods provide accurate and safe treatment with constant injection forces. It allows the user to perform various injection technique according to treatment site.



Thin-wall needle

Regular needle

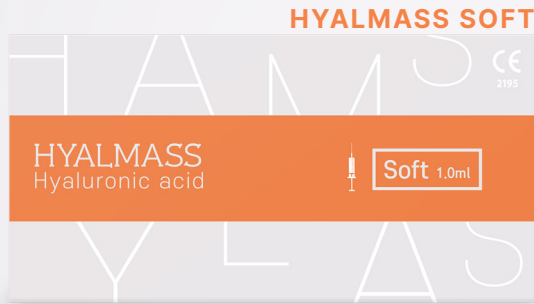
-30G TW needle for soft type

-27G TW needle for mild, hard type

Comfort grip

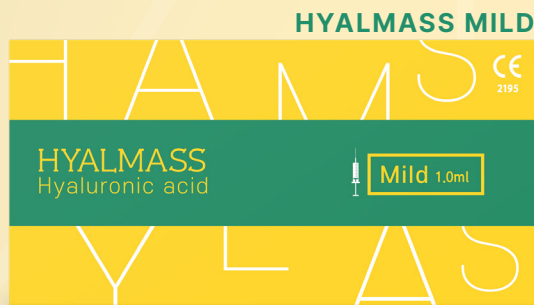
Anti-Slip

CE
2195



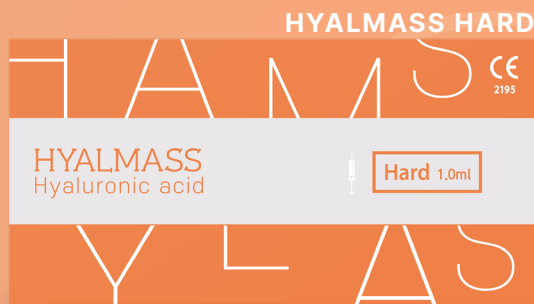
Cross-linked Hyaluronic Acid (24mg/ml)
Lidocaine (3mg/ml)
Epidermis Layer / 200 µm
Lips, Mild wrinkles
2 Needles (2*30G)

CE
2195



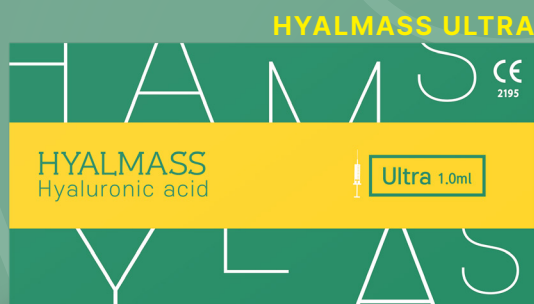
Cross-linked Hyaluronic Acid (24mg/ml)
Lidocaine (3mg/ml)
Dermis Layer / 400 µm
Nose, Chin, Wrinkles
2 Needles (2*27G)

CE
2195



Cross-linked Hyaluronic Acid (24mg/ml)
Lidocaine (3mg/ml)
Dermis Layer / 600 µm
Nose, Chin, Wrinkles
2 Needles (25G, 27G)

CE
2195



Cross-linked Hyaluronic Acid (24mg/ml)
Lidocaine (3mg/ml)
Deep dermis Layer / 400 µm
Cheeks, Forehead, Deep wrinkles
2 Needles (25G, 27G)

Soft Mild Hard Ultra

HYALMASS

Sterile Absorbable Injectable Dermal Filler with Lidocaine



- Forehead **Ultra**
- Frown Lines **Hard**
- Crow's Feet **Soft**
- Eye Area **Soft**
- Cheek / Nose **Ultra**
- Nasolabial Folds **Hard**
- Filtrum **Mild, Hard**
- Marionette Lines **Hard**
- Lip **Soft, Mild**
- Chin **Hard, Ultra**

